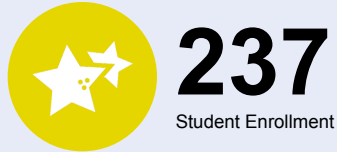




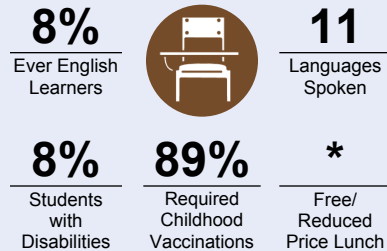
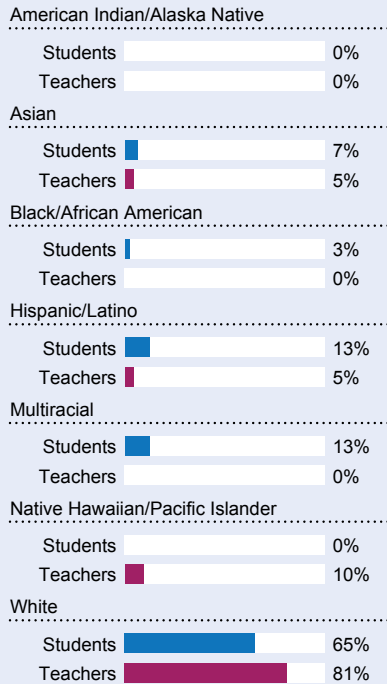
OREGON AT-A-GLANCE SCHOOL PROFILE Multi-sensory Instruction Teaching Children Hands-On (MITCH)

PRINCIPAL: Keri Butler | GRADES: K-5 | 19550 SW 90th Court, Tualatin 97062 | 503-639-5757

Students We Serve



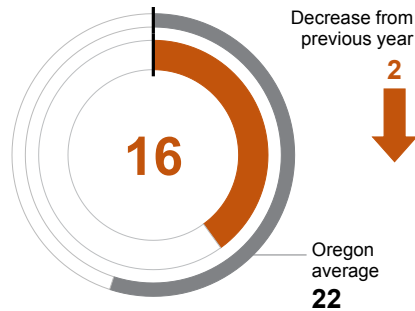
DEMOGRAPHICS



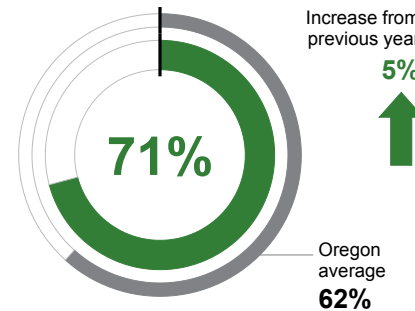
*<10 students or data unavailable

School Environment

CLASS SIZE Median class size.



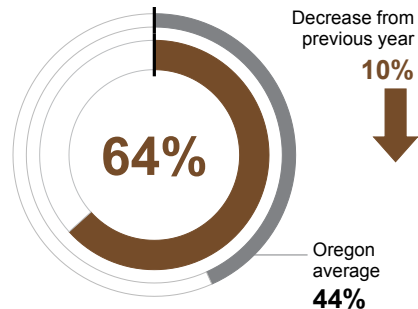
REGULAR ATTENDERS Students who attended more than 90% of their enrolled school days.



Academic Success

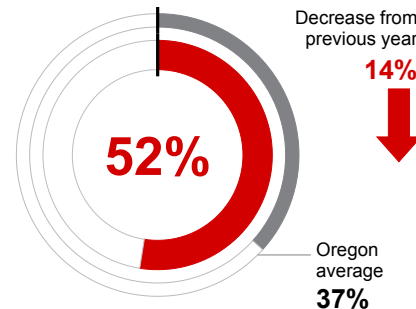
ENGLISH LANGUAGE ARTS

Students meeting state grade-level expectations.



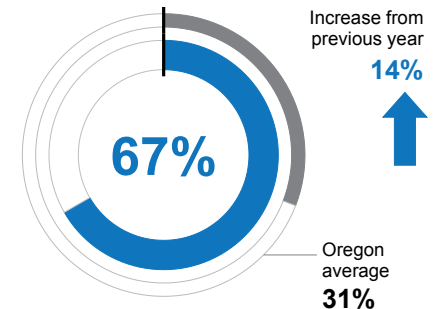
MATHEMATICS

Students meeting state grade-level expectations.



SCIENCE

Students meeting state grade-level expectations.



School Goals

MITCH is intentional in our long-term goals, annual targets, and daily purpose. A five-year strategic plan focuses on improving every student's learning. Request our complete strategic plan to learn more.

State Goals

The Oregon Department of Education is partnering with school districts and local communities to ensure a 90% on-time, four year graduation rate by 2027. To progress toward this goal, the state will prioritize efforts to improve attendance, provide a well-rounded education, invest in implementing culturally responsive practices, and promote continuous improvement to close opportunity and achievement gaps for historically and currently underserved students.

Safe & Welcoming Environment

TTSD continuously evaluates and responds to the needs of our ever-changing world and specifically our student population. We hold an uncompromised commitment to the safety and well-being of our students and staff, and maintaining a safe, inclusive, respectful, and rigorous learning environment. Our goal is for all students to feel physically and emotionally safe and respected. We are led by Board policies dedicated to protecting all students, staff, and families from discrimination, bias, hate, and harassment.



OREGON AT-A-GLANCE SCHOOL PROFILE CONTINUED

Multi-sensory Instruction Teaching Children Hands-On (MITCH)



Outcomes

Our Staff (rounded FTE)



16

Teachers



0

Educational assistants



<1

Counselors/
Psychologists/
Social Workers



80%

Average teacher retention rate over the past three years



50%

% of licensed teachers with more than 3 years of experience



No

Same principal in the last 3 years

REGULAR ATTENDERS

American Indian/Alaska Native	<10 students or data unavailable
Asian	56%
Black/African American	<10 students or data unavailable
Hispanic/Latino	59%
Multiracial	80%
Native Hawaiian/Pacific Islander	<10 students or data unavailable
White	74%
Free/Reduced Price Lunch	<10 students or data unavailable
Ever English Learner	85%
Students with Disabilities	65%
Migrant	<10 students or data unavailable
Homeless	<10 students or data unavailable
Students in Foster Care	<10 students or data unavailable
Military Connected	<10 students or data unavailable
Talented and Gifted	<10 students or data unavailable
Female	73%
Male	70%
Non-Binary	<10 students or data unavailable

ENGLISH LANGUAGE ARTS

<10 students or data unavailable
<10 students or data unavailable
<10 students or data unavailable
32%
82%
<10 students or data unavailable
<10 students or data unavailable
73%
<10 students or data unavailable
<10 students or data unavailable
<10 students or data unavailable
25%
<10 students or data unavailable
<10 students or data unavailable
<10 students or data unavailable
<10 students or data unavailable
<10 students or data unavailable
76%
54%
<10 students or data unavailable

MATHEMATICS

<10 students or data unavailable
<10 students or data unavailable
<10 students or data unavailable
16%
73%
<10 students or data unavailable
60%
<10 students or data unavailable
<10 students or data unavailable
42%
<10 students or data unavailable
<10 students or data unavailable
<10 students or data unavailable
<10 students or data unavailable
46%
58%
<10 students or data unavailable

About Our School

BULLYING, HARASSMENT, AND SAFETY POLICIES

We are committed to fostering a school environment that is free from hazing, harassment, intimidation, racism, bullying, cyberbullying, menacing, or any threat to personal safety or race/national origin discrimination. This commitment is mandated by Board policy and reinforced by our student handbook. TTSD students have the responsibility to respect the rights of others, seek help when they know about a wrongful act, and resolve disputes peacefully. We teach anti-bullying and anti-hate lessons and provide professional supports around social, emotional, and behavioral health.

EXTRACURRICULAR ACTIVITIES

- School Garden
- Agriculture Program
- Farm-to-Table Trips
- Core Knowledge Events
- Family and Community Nights
- Art Club
- Chess Club
- Play Fit Fun
- STEAM Club
- Yoga Club
- Soccer Club
- Oregon Battle of the Books

PARENT ENGAGEMENT

TTSD creates collaborative, culturally responsive relationships with all families. Communication is delivered in a variety of ways to ensure parents are informed and engaged in their students' learning and school environment. We welcome parent volunteers in our classrooms and school. Dedicated staff work with our families to serve the needs of each of our students. All major decisions that impact our students are made in partnership with our students and families.

COMMUNITY ENGAGEMENT

The TTSD community has a long and proven history of support for education and their schools. We work every day to steward that support by preparing our students for success in school and life. Our district strives to provide world-class experiences exposing our students to innovative learning in state-of-the-art buildings delivered by best-in-class teachers. We recognize that we can only do this work in partnership with our community. We are grateful for the life-changing assistance we receive from our volunteers, businesses, civic groups, faith communities, and countless others.